



JCB LOADALL PROVIDES YOU UNPARALLELED VERSATILITY

JCB attachments help you to get more from your machine.

- JCB tool carrier system makes attachment changeover quick and easy.
- For added versatility, all JCB Loadalls are fitted as standard with a single boom auxiliary feature which can power a wide range of attachments.
- Various control patterns are available, depending on different applications.
- Choose from wide array of attachments for your different needs.

GP shovel (standard)



Capacity: 1.2 cum

Width: 2.3 metre

Application: General material handling

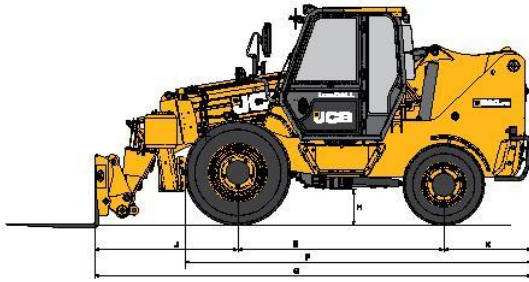


UNLIMITED ATTACHMENTS

FOR ANY APPLICATION

ALPHA
CRANE & FORKLIFTS
www.alphacrane.in

STATIC DIMENSIONS



STATIC DIMENSIONS - Dimension - m (ft-in)

Parameters	530-70	530-110
A Overall height	2.67 (8-9)	2.67 (8-9)
B Overall width (over tyres)	2.32 (7-7)	2.32 (7-7)
C Inside width of cab	0.79 (2-7)	0.79 (2-7)
D Front track width	1.98 (6-6)	1.98 (6-6)
E Wheelbase	2.49 (8-2)	2.49 (8-2)
F Overall length to front tyres	4.19 (13-9)	4.19 (13-9)
G Overall length to front carriage	4.66 (15-3)	5.3 (17-4)
H Ground clearance	0.40 (1-4)	0.40 (1-4)
J Front wheel centre to carriage	1.10 (3-7)	1.73 (5-8)
K Rear wheel centre to rear face	1.07 (3-6)	1.07 (3-6)
Operating weight	7260 kg (with GP bucket)	8870 kg (with Fork)
Outside turn radius (over tyres)	4.85 (15-11)	4.85 (15-11)
Bucket roll back angle (at full height) 37 deg.		Overall width with stabilisers fully deployed 2.65 (8-8)
Bucket dump angle (at full height) 44 deg.		Fork roll back angle (at full height) 7.5 deg.

ENGINE

JCB 448, naturally aspirated 4 cylinder, water cooled diesel engine
 Displacement: 4.8 L
 Gross power: 56 kW (76 hp) @ 2200 rpm
 Max torque: 310 Nm (31.6 kgm) @ 1100 rpm

TRANSMISSION

JCB 4WD synchroshuttle transmission. 4-speed fully synchromesh gearbox with integral torque converter and electrically operated forward - reverse shuttle.

- Easy to use, column mounted electric switch allows operator to change machine direction while in motion without taking his hands off the steering wheel. This leads to safe and efficient operation and cycle times.
- The pedal layout and conventional 4-pattern gear lever with transmission switch adds to the overall ease of operation.
- Torque converter stall ratio 3.01:1.
- 4WD can be selected at any time on the move with a simple electric switch.

AXLES

Front axle:
 JCB drive axle rigidly mounted incorporates JCB max-track torque proportioning differential, driven by propeller shaft from gear box.

Rear axle:
 4WD steer drive axle centrally pivoted with oscillation angle of 16°, driven by propeller shaft from gear box.

BRAKES

Service: Hydraulically actuated, dual line, self adjusting, compensated oil immersed, multi-disc type on the front axle, operated through independent pedals, linked together for normal use. Two independently operating foot pedals enable machine to manoeuvre in tight spaces.

Parking: Hand operated cable actuated disc brake mounted on front axle input disc.

STEERING

- Rear wheel hydrostatic power steering with manual capability in the event of engine or hydraulic power failure.
- Max. steering angle: ± 48°

ELECTRICALS

- 130 Ampere-hour, 12 Volts battery system with alternator and full road lighting.
- Dust and water proof IP69 electrical connectors.

TYRES

Front : 13.00 x 24 -16PR
 Rear : 12.5 x 18 -12PR

Industrial traction pattern tyres

SPEED

Maximum road speed : 30 km/hr

SERVICE CAPACITIES

Fuel tank	110 L
Hydraulic tank	130 L
Engine coolant	16.5 L
Engine oil	14.2 L
Transmission	16 L
Front axle	21 L
Rear axle	11 L

OPTIONS & ACCESSORIES

- Livelink
- Cabin clean air kit
- Turbo pre-cleaner
- Windscreen & roof guard
- Rear grill guard
- Spark arrestor
- Boom & rear work lights
- Dome mirror

CABIN

- Conform to ROPS ISO 3471 & FOPS ISO 344 tinted & laminated cab glass provides excellent all round visibility & sun protection.
- A fully adjustable seat with seat belt combined with ergonomically positioned controls and soft touch steering wheel maximise operator output.
- Large convex rear view mirror; interior light, front screen wiper; front and rear horn, hazard warning system and tool box.
- Instrumentation panel includes engine speed, engine hours, fuel level, water temperature and 12V socket for mobile charger.
- Load Moment Indicator (LMI) and inclinometer to provide warnings on machine stability.

HYDRAULICS

	530-70	530-110
Pump	2 Section Gear	
Pump capacity	100 lpm	
Main relief valve	245 bar	
Hydraulic cycle times	Seconds	
Lift	9.0	12.0
Lower	6.21	8.12
Extend	5.54	15
Retract	5.84	20
Bucket dump	2.1	1.8
Bucket crowd	2.7	2.6

- Filtration through suction strainer and return line 'JCB filtromatic filter'.
- During lifting, the circuit automatically adjusts the pump flow to provide more power for lifting operation.

LIVELINK*

Advanced telematics system that enables you to monitor and manage your machines remotely by providing information on:

Service: Routine maintenance information and alerts

Operation: Health alerts and usage data

Security: Machine location & movement data

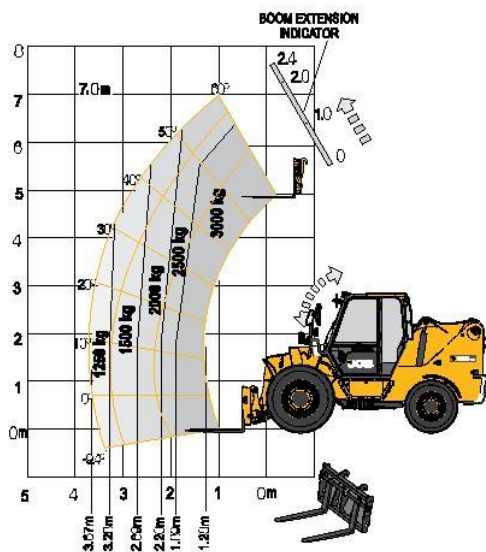
*Optional

* All dimensions, weights and timings are variable within 1.5%. JCB reserves the right to change specifications without prior notice.

LOAD CHART

LOADALL 530-70

Operating weight : 7260 kg Max. payload : 3 tonnes Max. lift height : 7 metres

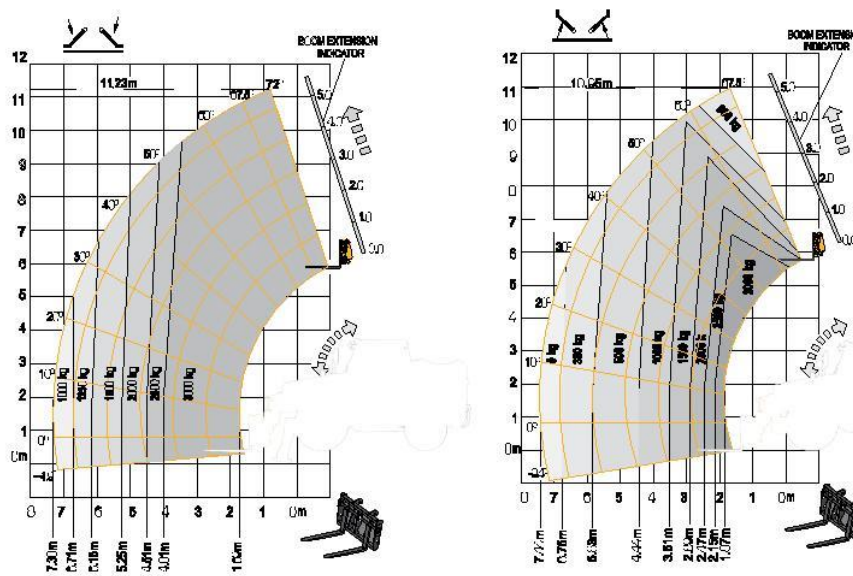


PERFORMANCE DIMENSIONS

Parameters	Dimension - m (ft-in)
Max lift capacity	3000 kg
Lift capacity to full height	2500 kg
Lift capacity to full reach	1250 kg
Lift height	7 m
Reach at max lift height	1.0 m
Maximum placing height	6.3 (20-8)
Maximum dump height	5.8 (19-0)

LOADALL 530-110

Operating weight : 8870 kg Max. payload : 3 tonnes Max. lift height : 11 metres



PERFORMANCE DIMENSIONS

Parameters	Dimension - m (ft-in)	
	Extended	Retracted
Max lift capacity	3000 kg	3000 kg
Lift capacity to full height	3000 kg	500 kg
Lift capacity to full reach	1000 kg	300 kg
Lift height	11.23 m	10.95 m
Reach at max lift height	0.81 m	1.69 m
Maximum placing height	10.5 (34-5)	10.5 (34-5)
Maximum dump height	10.5 (34-5)	10.5 (34-5)