

F-210

Hydraulic Mobile Crane Capacity : 20 tonnes

Rough terrain and rugged, 4x4 articulated NextGen pick 'n' move crane



- 4 x 4 Drive
- Front mounted ergonomically designed Cabin
- Improved kinematics with low Center of Gravity
- Slotted boom
- Self Adjusting hook block
- Fail safe air brakes



Nothing beats an **ACE**



1 ROPS CABIN
Front mounted, ergonomically designed Cabin for better visibility and driveability.



2 GROUND CLEARANCE
High ground clearance of 300mm for easier rough terrain operation.



3 OUTRIGGERS
Front Outriggers for added safety during high lift operations.



4 OPTIMIZED KINEMATICS AND LOW C.G.
F-210 crane has been designed keeping in mind operational safety parameters with low Center of Gravity (C.G.) providing best in class stability



5 EASY MAINTENANCE
The engine is easily accessible for daily maintenance checks including battery, air filter, oil dipstick and cooling system

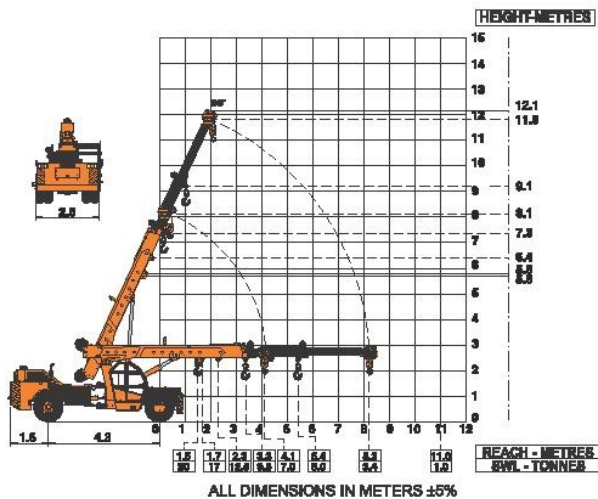


6 INCREASED VISIBILITY
Bigger size front windscreen provides better visibility.



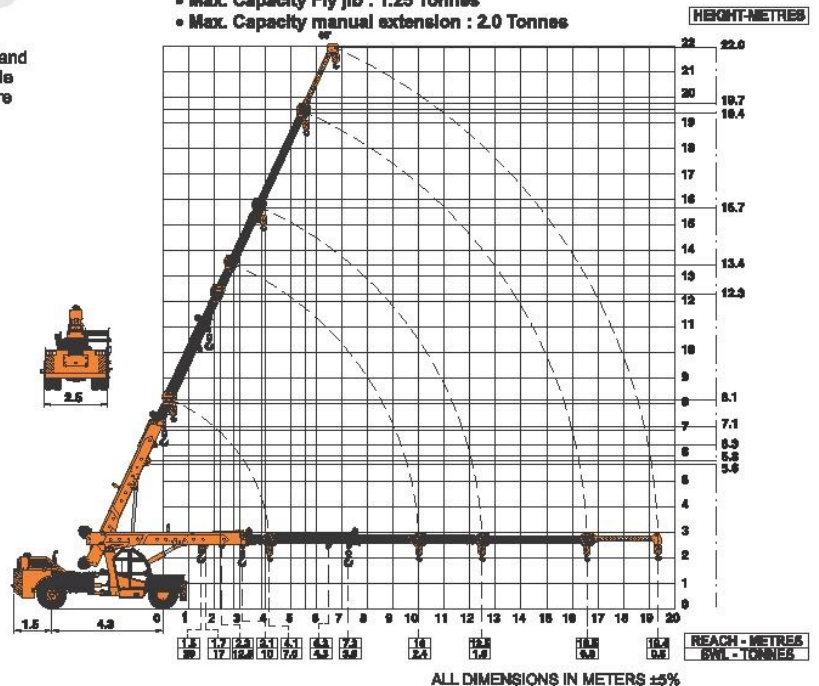
7 ENGINE
Best in class Ashok Leyland engine having nation wide service support and spare parts availability.

ACE F210 Model Crane fitted with 3 part slotted boom (12.1 mtrs. height)



ACE F210 Model Crane fitted with 3 part slotted boom + 1 Manual (19.7 mtrs. height)

- Max. Capacity Fly Jib : 1.25 Tonnes
- Max. Capacity manual extension : 2.0 Tonnes



NOTE: • Rated loads are on the basis of operation on firm and level surface.
• Full rated lifting capacity available in articulated / steered condition.