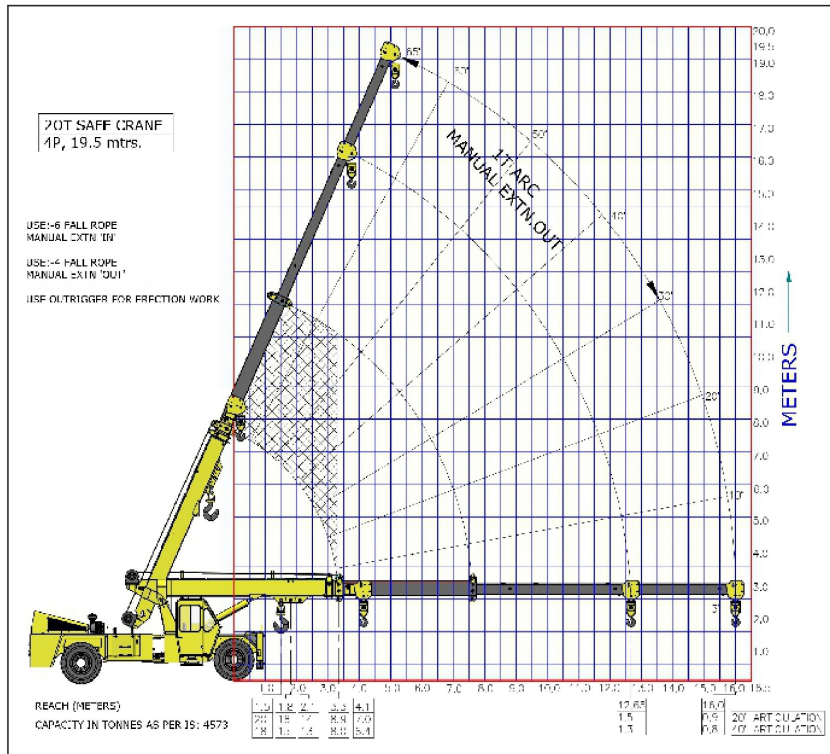


## Load Chart



- Use 6 Fall Rope Manual Extn 'IN'
- Use 4 Fall Rope Manual Extn 'OUT'
- Use Outriggers for Construction work

### Features:

- First Crane with front wheel drive to ensure excellent traction
- 15T load lifting through snatch block
- Telematics as standard fitment
- Boom Height – 19.5m
- Travel Speed of 38 km/hr – idle for road running
- High Ground Clearance
- Creep Speed 1.3 Km/hr
- Reverse Camera & Wheel Guard
- FM Radio & Mobile Charger in Cabin
- Maintenance free articulation bearings

## New Generation Hydraulic Mobile Crane

- 20 T capacity crane with 19.5m vertical height
- Front wheel drive machine
- Best traction go connect during crane operations
- First crane able to lift 15 T through snatch block.
- Travel long distance on own power.
- Front mounted cabin with steering wheel
- Chassis type design, optimised geometry for enhanced stability and control.
- Equipment monitoring system (Telematics) as standard fitment.
- Best in class Creep Speed



Accessories as shown in the picture may not be the part of standard fitment and are subject to change without prior notice.

**SAFE • STRONG • STURDY**

The information contained in this leaflet is intended to be of general nature only. We reserve the right to change the specifications without any prior notice. All dimensions and weights are variable with in ±5%

# ESCORTS F-20

## Specifications Features

### Rated Capacity

20 tonne at	1.5 m radius
900 Kg at	16 m radius
Max hook height	19.5 m

### Vehicle Performance

Speed	38 kmph max
Creep Speed	1.3 kmph

### Axles

Front	Rigidly mounted front wheel drive axle
Rear	Mounted with semi-elliptical springs

### Engine

Diesel engine of VOLVO Eicher make, Model E 483 TCIC, Turbo charged water cooled, developing 101 HP@ 2400 rpm or equivalent engine.

### Transmission

VECV make ET6055 Syncromesh gear box  
Auxiliary gear box for high & low range

### Clutch

Single, dry type friction clutch plate

### Brakes

- Dual circuit brakes
- Fully air operated brakes on front wheels and pneumatically assisted hydraulic brakes on rear wheel

**Parking:** Air operated, spring actuated fail safe brakes on front wheel

### Tyres

8 Nos. 12-24, 20 PLY

### Hydraulic System

**Main Pump :** Tandem Hydraulic vane Pump

**Control Valve :** Main control valve 3 spool double acting with built in relief valve & auxiliary valve

**Outrigger Control valve:** 2 Spool double acting type

### Steering

Full power orbitrol with twin hydraulic double acting rams, 40° articulation on either side

### Boom

4 part boom, 3 part hydraulically powered & fully synchronised  
4th part power extended and manually pinned for safety

### Hoist

15 T Hydraulically operated winch with 6 falls snatch block  
Built in safety brakes

### Wheel Base

4.88 m

### Dimensions

Overall length	10.9 m
Overall width	2.7 m
Overall height	3.3 m

### Operating Weight

18565 kg

### Wheel Track

Front	1.96 m
Rear	1.96 m

### Turning Radius

7.85 m

### Electrical System

24V, DC

### Standard Accessories

All weather cabin with unrestricted visibility  
Real View camera with LCD  
Equipment monitoring system (telematics)  
Front outriggers  
Wheel guards  
FM radio and mobile charger

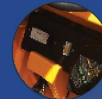
### Optional Accessories

Safe load indicator with hydraulic cut off  
Spare wheel  
Air conditioned cabin  
RHINO hook  
Man carrying basket  
Fire extinguisher

Control levers for ease and comfort



Equipment Monitoring System and F.M. Radio with speakers



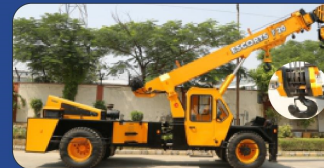
L.C.D. for rear view camera



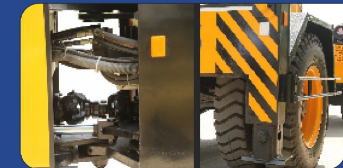
Mobile charging panel



▲ Spacious Cabin



▲ India's first front wheel drive crane. 6 fall snatch block & heavy duty hook for precision handling.



▲ Maintenance free articulated bearing. Wheel guard standars fitment for safety .



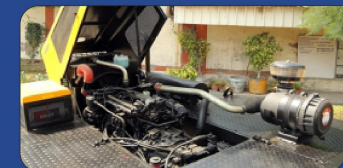
▲ Rugged front axle for guaranteed best traction during crane operation.



▲ Rear View Camera and Integrated Protected tail lights. High ground clearance



▲ Front outrigger with rectangular outer box for better load lifting, stability & safety. Front working light for better vision.



▲ Volvo Eicher Engine. Bonnet with gas studs Battery & air filter on top of rear chassis for ease of maintenance.